

Venting hob - Novy Easy 90 Pro Prestige
4-zones 90 cm
Black

EAN 5414425255498



Controls

Type of controls	Control knobs
Colour & material knob	Black aluminium
Colour LED display hob	Red

Dimensions (mm)

Dimensions (WxDxH) (mm)	800 x 520 x 215
Cut-out worktop (WxD)(mm)	750 x 490
Dimensions cut-out with inset (WxDxH) (mm)	904 x 524 x 7

Cooker hood

Energy label Extraction mode

Energy efficiency class (EElhood)	A+++
Annual energy consumption (kWh/y) (AEChood)	17,9
Fluid Dynamic Efficiency class (FDEhood)	A
Lighting Efficiency class (LEhood)	-
Grease Filtering Efficiency class (GFEhood)	B

General information

Integrated motor	•
Number of metal grease filters	1
Duct out	•
Recirculation	• (default)
Dimensions exhaust (mm)	89 x 222
Position exhaust	Back left / Under left

Functions

Number of speeds	9 + P
Automatic speed control	•
Manual speed control	•
Run-on timer recirculation mode (min.)	30 (default)
Run-on timer extraction mode (min.)	10
Cleaning indicator for grease filter	•
Replacement indicator for recirculation filter	•
Watertank(s) for cleaning	•

Air flow & noise level Extraction mode

Air flow duct out (m ³ /u) (EN 61591):	
- Minimum	220
- Maximum continues	520
- Maximum	610
Air pressure (Pa):	
- Maximum	452
Sound pressure/power duct out setting (dB(A) re 1 pW)(EN 60704-2-13):	
- Minimum	34/47
- Maximum continues	54/66
- Maximum	58/70

Air flow & noise level Recirculation mode

Air flow duct out (m ³ /u) (EN 61591):	
- Minimum	172
- Maximum continues	472
- Maximum	537
Sound pressure/power duct out setting (dB(A) re 1 pW)(EN 60704-2-13):	
- Minimum	32/44
- Maximum continues	53/65
- Maximum	55/67

Induction hob

General characteristics

Black opaque glass	•
Bevelled glass edge	•
Surface and flushline mounting	• / •

Cooking zones

Number of octagonal zones	4
Cooking zones (mm)	240 x 210
Power per zone (max. / power) (W)	2100/3000

Cooking functions

Power levels	9 + Power
Keep warm function	42°
Manual bridge function flexzones	• (2x)
Residual heat indication	•
Automatic cooking	•
Child lock function	•
Automatic pan recognition	•

Technical specifications

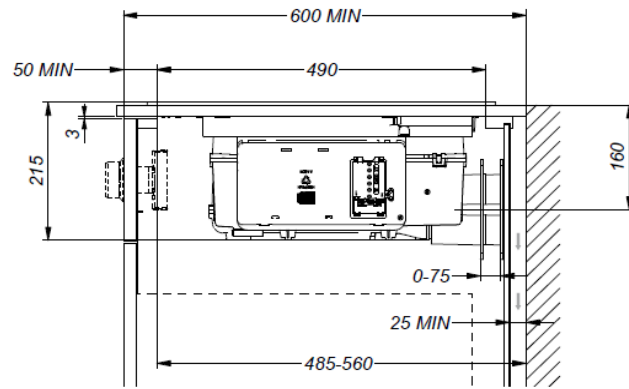
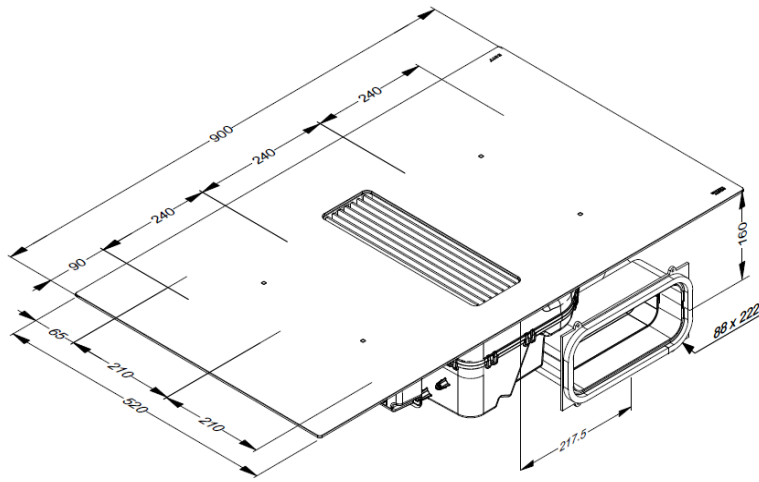
Electrical connection value (W)	7568 W
Multiphase supply voltage	230 V / 400 V - 2N / 3N
Single-phase supply voltage	230 V
Power cable (included)	1,5 m
Weight (kg)	24,3

Accessories

Accessories

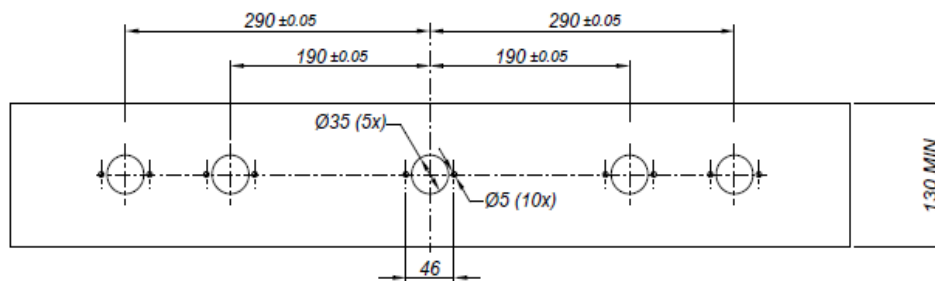
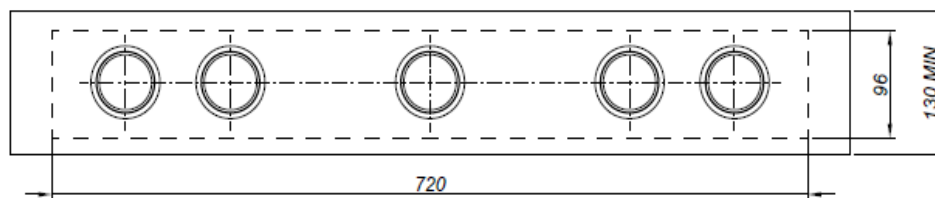
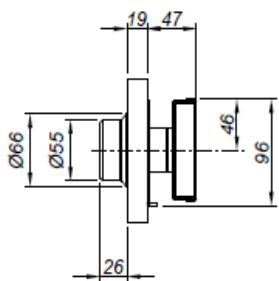
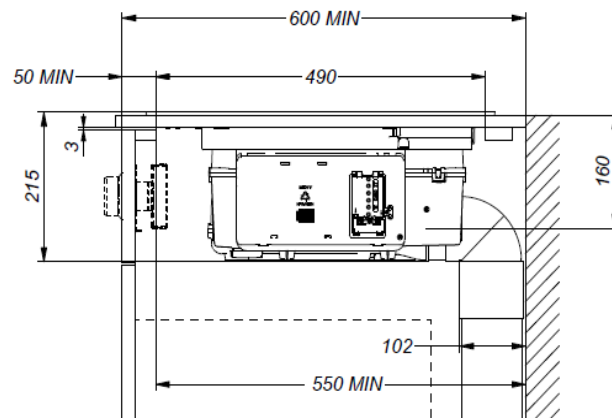
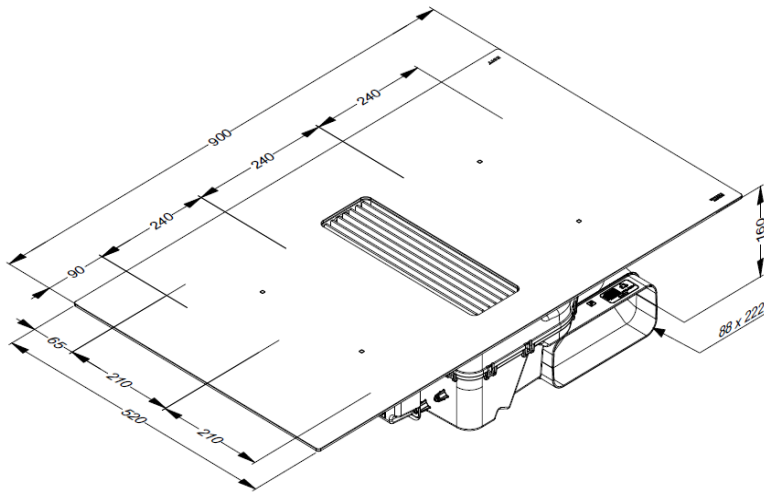
Connection adapter back panel (recirculation)	Supplied with appliance
Vertical bend 90° (extraction)	Supplied with the appliance
Electric connection cable 1,5m	Supplied with the appliance
Installation kit for recirculation with discharge adapter plinth	1861.820 (optional)

Technical drawings
Recirculation



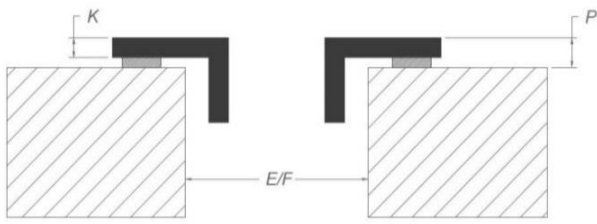
*When installing directly against an uninsulated outside wall, we recommend using an installation kit with air outlet in the plinth.

Extraction

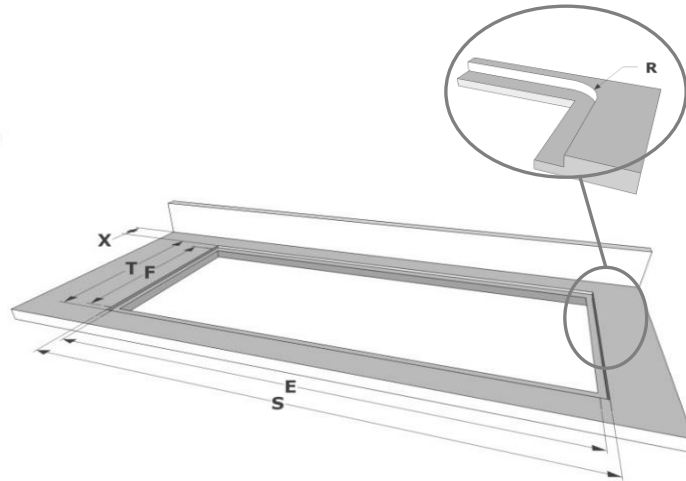
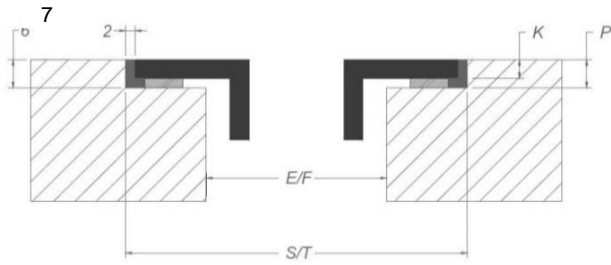


The front panel of the cabinet must be removable to mount the control knobs.

Surface mounting



Flushline mounting



Dimensions

mm

	E	F	K	P	R	S	T	X	Y
Surface	750	490	4	6				55 MIN	3
Flush	850	490	4	6	7	904	524	55 MIN	3

